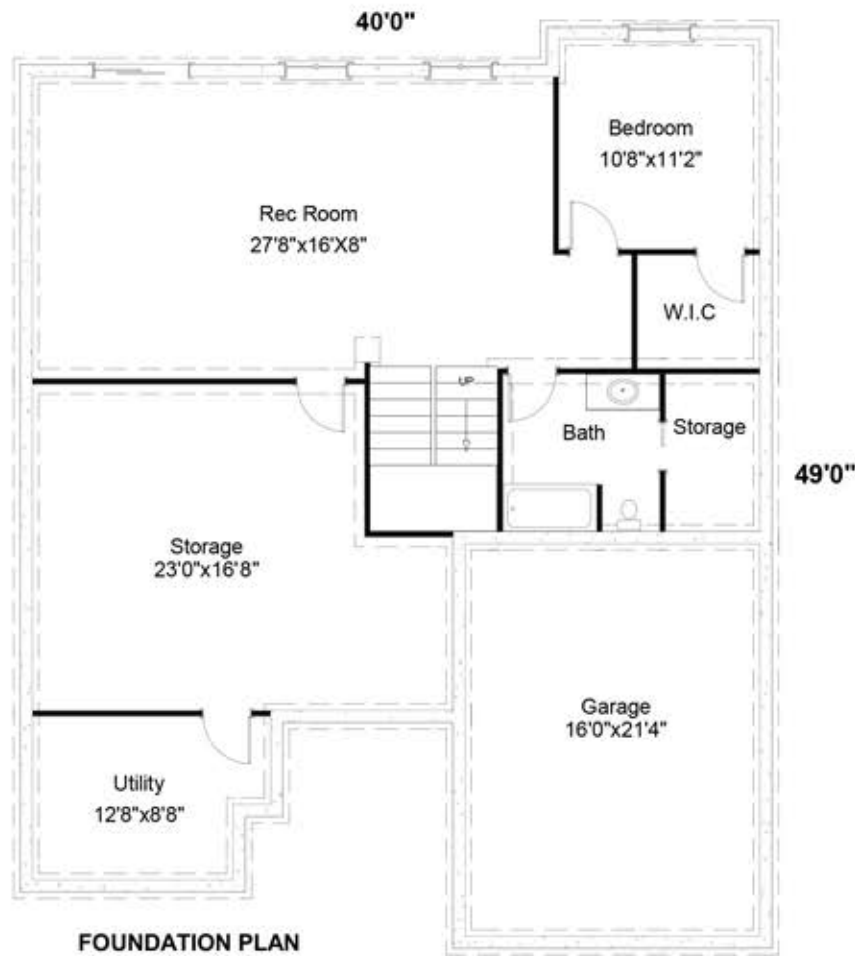




The Preston  
**YORK**

# The Preston



 **2+**
 **2+**
 **YES**


**MAIN LIVING** 1325 sq ft  
**BASEMENT** 1325 sq ft  
**GARAGE** 365 sq ft

[INFO@YORKBUILT.CA](mailto:INFO@YORKBUILT.CA) • 709 722 5653 • [WWW.YORKBUILT.CA](http://WWW.YORKBUILT.CA) •

